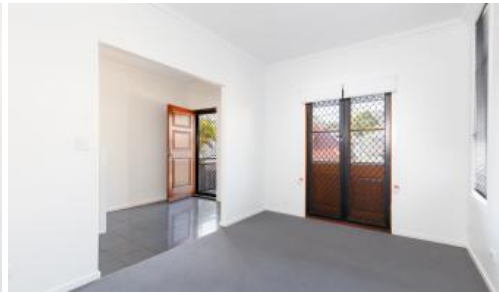


Leased

68 Princess Street, Petrie Terrace



THREE BEDROOM HOUSE, PRIME LOCATION

Three bedroom plus study home featuring:

- All bedrooms with built-in wardrobes and ceiling fans
- Main bedroom with walk-in wardrobe
- Deck of the bedrooms
- Two bathrooms
- Air conditioned living room
- Gas stove & dishwasher
- Storage underneath and double lock up garage

The property is just minutes walk from Brisbane CBD, parkland, entertainment venues, cafe's, restaurants, some of Brisbane's best private and public schools. Close to public transport and Suncorp Stadium. An inspection is a must!

Contact Theresa Fitzgerald PM Team on 07 3254 3666 to arrange an inspection

🛏 3 🚿 2 🚗 2

Price	\$670 per week
Property Type	Rental
Property ID	2456
Land Area	0 m2

Agent Details

TFPM Team - 0732543666

Office Details

New Farm
07 3254 3666

Theresa Fitzgerald
— SALES & MANAGEMENT —

The above information provided has been furnished to us by the vendor/s. We have not verified whether or not that information is accurate and do not have any belief in one way or the other in its accuracy. We do not accept any responsibility to any person for its accuracy and do no more than pass it on. All interested parties should make and rely upon their own inquiries in order to determine whether or not this information is in fact accurate.