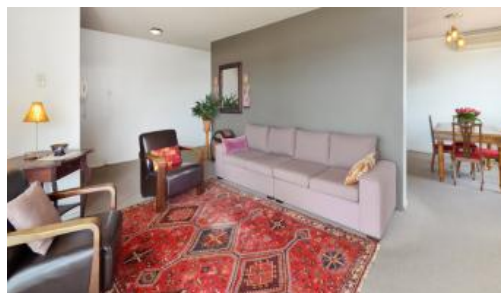


Leased

8, 161 Moray Street, New Farm



BEAUTIFUL VIEWS FROM EVERY ROOM

This huge 3 bedroom open plan apartment is one not to be missed!

Featuring:

- Good sized bedrooms, two with built ins
- Carpet throughout
- Very generous living space including separate dining and lounge- both with beautiful views
- Open plan kitchen, original but in good condition
- Spacious laundry
- Two balconies both with stunning views looking out towards the City, Brisbane River and New Farm
- Single Lock up garage

Located in a secure complex in one of New Farms most popular locations.

SORRY NO PETS

The above information provided has been furnished to us by the vendor/s. We have not verified whether or not that information is accurate and do not have any belief in one way or the other in its accuracy. We do not accept any responsibility to any person for its accuracy and do no more than pass it on. All interested parties should make and rely upon their own inquiries in order to determine whether or not this information is in fact accurate.

3 1 1

Price \$450 per week
Property Type Rental
Property ID 2445

Agent Details

TFPM Team - 0732543666

Office Details

New Farm
07 3254 3666

Theresa Fitzgerald
— SALES & MANAGEMENT —