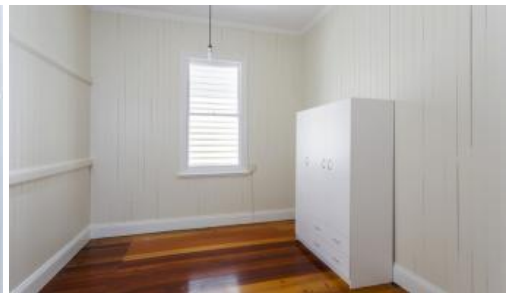




36 Merthyr Rd, New Farm



LARGE HOME WITH 4 BEDROOMS - EACH WITH THEIR OWN STUDY!

🛏 4 🚿 1 🚗 4

Enjoying an enviable position on Merthyr Rd, you simply won't believe what this property has on offer! You must inspect as seeing is believing. This property includes:

- Four large bedrooms with built in robes
- An additional four large studies, three of which directly adjoin the bedrooms
- A unique dual bathroom
- Separate lounge room
- Contemporary kitchen with electric cooking and dishwasher.
- Meals area off the kitchen
- Polished floor boards throughout
- The property has decorative ornate features throughout
- Laundry under house, with plenty of space for storage
- Tandem under cover car parking under house for two car PLUS a second driveway with off street space for an additional two cars to be parked tandem at the rear of the property

Price \$750 per week
Property Type Rental
Property ID 2353

Agent Details

TFPM Team - 0732543666

Office Details

New Farm
 07 3254 3666



Located on the corner of Merthyr Rd and Abbott St, this property is close to shops, transport, cafes, and the Riverwalk, all of which are only minutes away

from your front door. Don't delay! Arrange your inspection of this property today.

The above information provided has been furnished to us by the vendor/s. We have not verified whether or not that information is accurate and do not have any belief in one way or the other in its accuracy. We do not accept any responsibility to any person for its accuracy and do no more than pass it on. All interested parties should make and rely upon their own inquiries in order to determine whether or not this information is in fact accurate.